

Trompette II

LA MER ET L'AMOUR

C. DANGELO

Bossa Nova

D.S

Richardo glassbalance  
+46 70 3254736

SAX ALT

# LA MER ET L'AMOUR

Handwritten musical score for Saxophone Alto in G major, 4/4 time. The score consists of ten staves of music. The first staff begins with a treble clef, a key signature of two sharps (F# and C#), and a common time signature (C). The music features various rhythmic patterns, including eighth and sixteenth notes, and rests. The score is divided into sections labeled A, B, C, D, and E. Section A is a repeat sign. Section B contains a double bar line and a repeat sign. Section C contains a double bar line and a repeat sign. Section D contains a double bar line and a repeat sign. Section E contains a double bar line and a repeat sign. The score ends with a double bar line and the initials 'M.N.' below it.

Tom Hertel (Hertell)

Erland a gent.

Richardo glassbalance  
+46 70 325 47 36

SAX ALT

# LA MER ET L'AMOUR

Handwritten musical score for Saxophone Alto. The score is written on a single staff in treble clef with a key signature of two sharps (F# and C#) and a common time signature (C). The piece is titled "LA MER ET L'AMOUR". The score consists of several measures of music, including a first ending marked with a "2" and five sections labeled A, B, C, D, and E. Section A is a repeat sign. Section B contains notes with slurs and accents. Section C contains notes with slurs and accents. Section D contains notes with slurs and accents. Section E contains notes with slurs and accents. The score ends with a double bar line and the initials "M.N." written below it.

Four empty musical staves, each consisting of five lines, arranged vertically.



Richardo glassbalanc  
+46 70 3254736

SAX ALT

# LA MER ET L'AMOUR

Handwritten musical score for Saxophone Alto in G major, 4/4 time. The score consists of ten staves. The first staff begins with a treble clef, a key signature of two sharps (F# and C#), and a common time signature (C). The music features various rhythmic patterns, including eighth and sixteenth notes, and rests. Section markers A, B, C, D, and E are placed above the staves. The final staff ends with a double bar line and the initials 'M.H.' below it.

Richardo glassbalanxe  
+46 70 325 4736

SAX TENOR

Bossa Nova

Handwritten musical notation on a single staff, starting with a treble clef, a key signature of one sharp (F#), and a 4/4 time signature. The notation includes eighth and sixteenth notes with stems, and a '2' at the end of the line.

Handwritten musical notation on a single staff, continuing from the previous line. It includes a boxed letter 'A' above the staff, indicating a section marker.

Handwritten musical notation on a single staff, continuing from the previous line. It includes a boxed letter 'B' above the staff, indicating a section marker.

Handwritten musical notation on a single staff, continuing from the previous line. It includes a boxed letter 'C' above the staff, indicating a section marker.

Handwritten musical notation on a single staff, continuing from the previous line. It includes a boxed letter 'D' above the staff, indicating a section marker.

Handwritten musical notation on a single staff, continuing from the previous line. It includes various rhythmic markings above the notes.

Handwritten musical notation on a single staff, continuing from the previous line. It includes a '6' above the staff, possibly indicating a measure or a specific rhythmic pattern.

Handwritten musical notation on a single staff, continuing from the previous line. It includes various rhythmic markings and a double bar line at the end.

Four empty musical staves, each consisting of five horizontal lines, provided for additional notation.

Richardo glassbalance  
+46 70 3254736

PIANO

LA MER ET L'AMOUR

Bossa Nova

Handwritten musical score for piano, featuring ten staves of music. The score includes various chords and a key signature change from C major to Bb major. The chords are as follows:

- Staff 1: Gm<sup>7</sup>, Fm<sup>7+</sup>, F<sup>6</sup> [A], D<sup>b6/9</sup>
- Staff 2: Am, Ab<sup>7</sup>, Gm<sup>7</sup>, Gm<sup>7</sup>, G<sup>b7</sup>, Gm<sup>7</sup>, C<sup>7</sup>, Fm<sup>7+</sup>, F<sup>6</sup>
- Staff 3: B<sup>b6</sup>, Gm, C<sup>7</sup>, Fm<sup>7+</sup>, F<sup>6</sup>, Gm, G<sup>#zm</sup>
- Staff 4: F, D<sup>7</sup>, Gm, G<sup>#zm</sup>, F, B<sup>b7</sup>, Am
- Staff 5: Gm<sup>7</sup>, C<sup>7</sup>, Gm<sup>7</sup>, C<sup>7</sup>, Fm<sup>7+</sup>, F<sup>6</sup>, B<sup>b7</sup>, Gm, C<sup>7</sup>
- Staff 6: Fm<sup>7+</sup>, F<sup>6</sup>, Gm<sup>7</sup>, G<sup>#zm</sup>, Fm<sup>7+</sup>, D<sup>7</sup>
- Staff 7: Gm, G<sup>#zm</sup>, F, F, G<sup>b7</sup>, F, B<sup>b7</sup>
- Staff 8: Eb<sup>7</sup>, Ab<sup>7+</sup>, B<sup>b7</sup>, Eb<sup>7</sup>
- Staff 9: Ab<sup>7+</sup>, F<sup>7</sup>, B<sup>b7</sup>, Eb<sup>7</sup>, Ab
- Staff 10: Dm, Gm, C<sup>9</sup>, Gm<sup>7</sup>, G<sup>b7</sup>, D.C.

The score concludes with a double bar line and the initials "H.H." and "D.C." (Da Capo).

Richardo glassbalance  
 +46 70 3254736

Trompette I

LA MER ET L'AMOUR

Bossa Nova

C. Dangelo

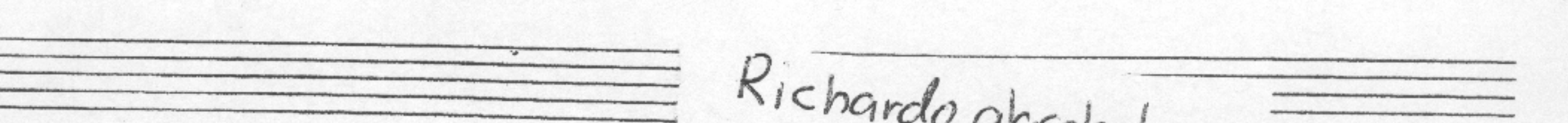
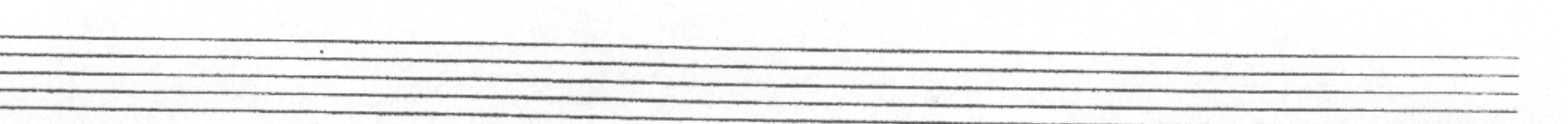
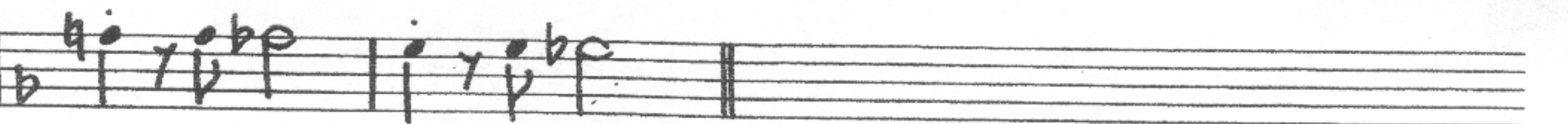
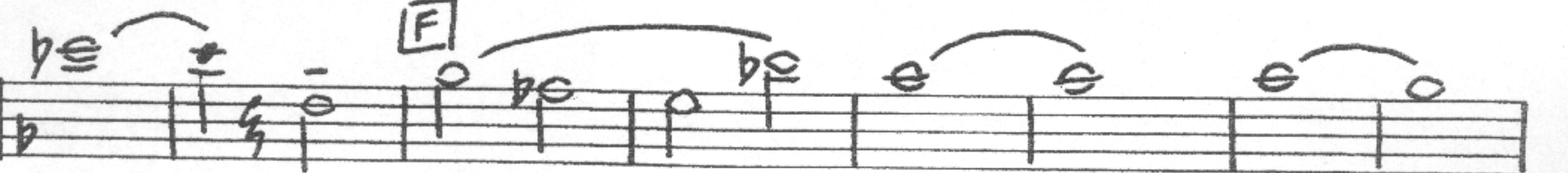
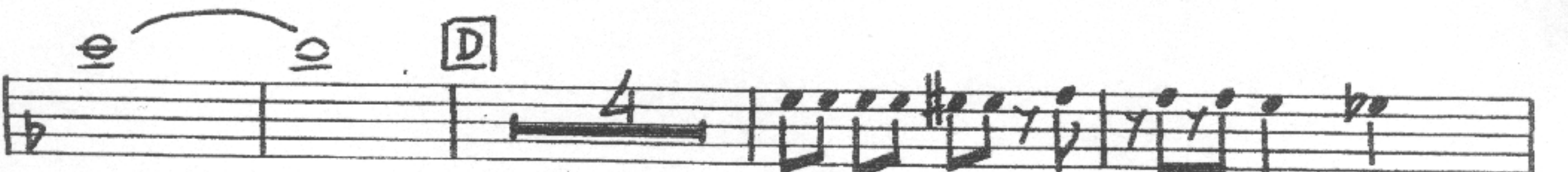
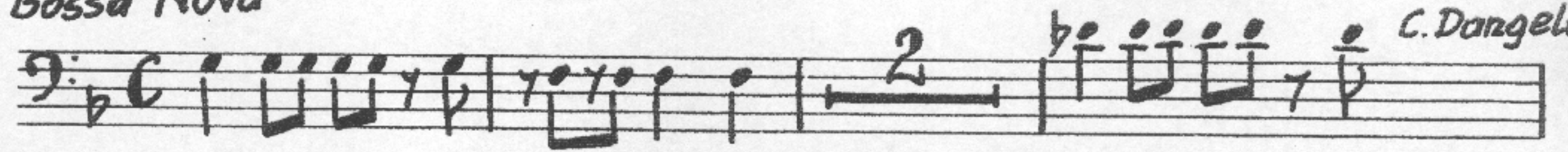
Richardo glassbalance  
+46 70 3254736

Puzon

# LA MER ET L'AMOUR

Bossa Nova

C. Dangelu



Richardo glassbalance  
+46 70 3254736